

**How to:**

**ESM Android app; Installation and Activation**

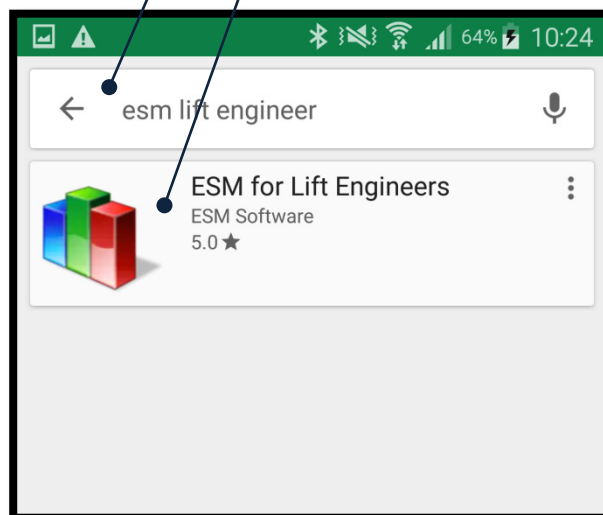
This document details how to install ESM's android 'app' onto your Smartphone.

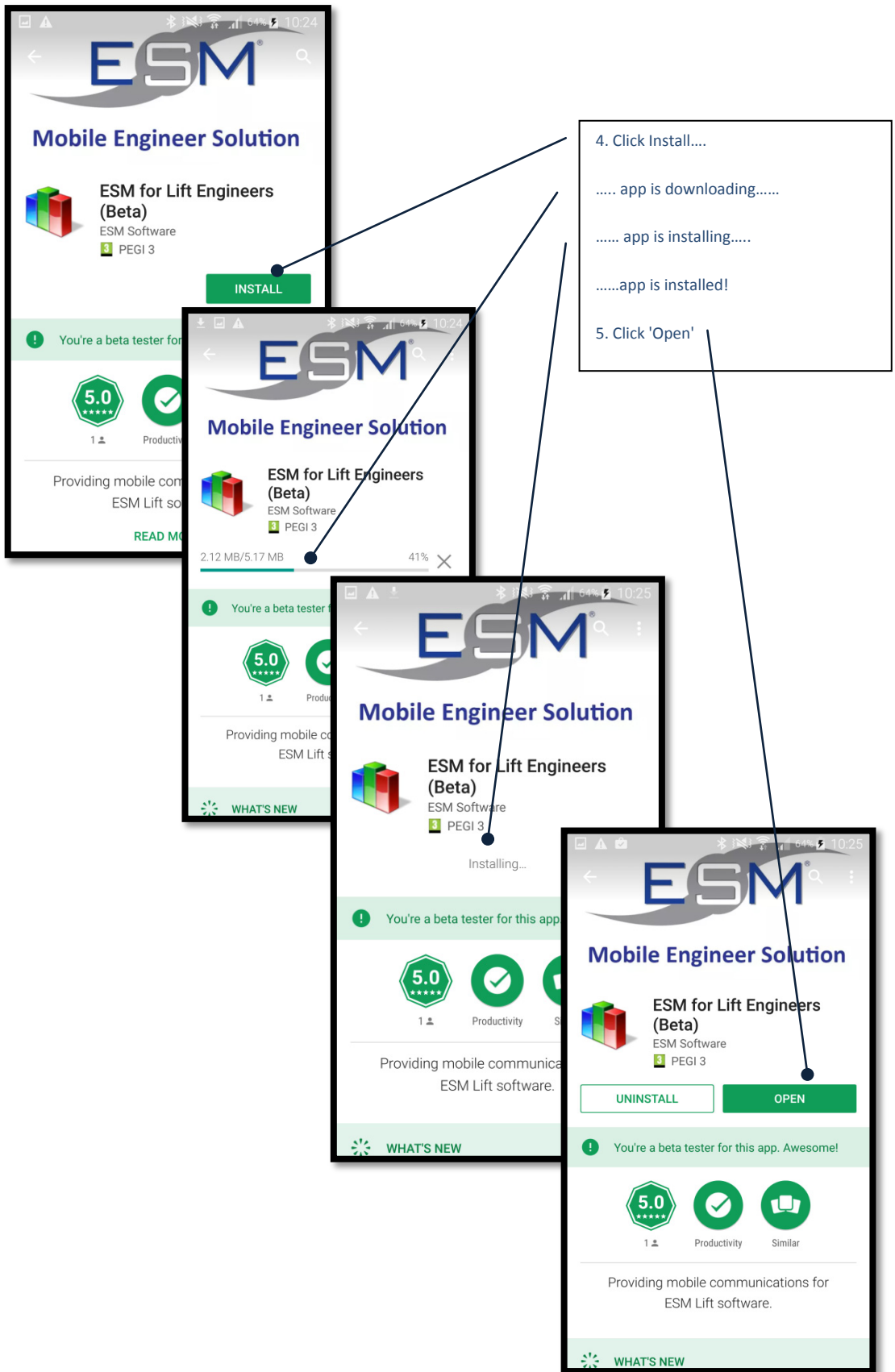
**--- Further Notes Will Go Here ---**

**1. App Installation**



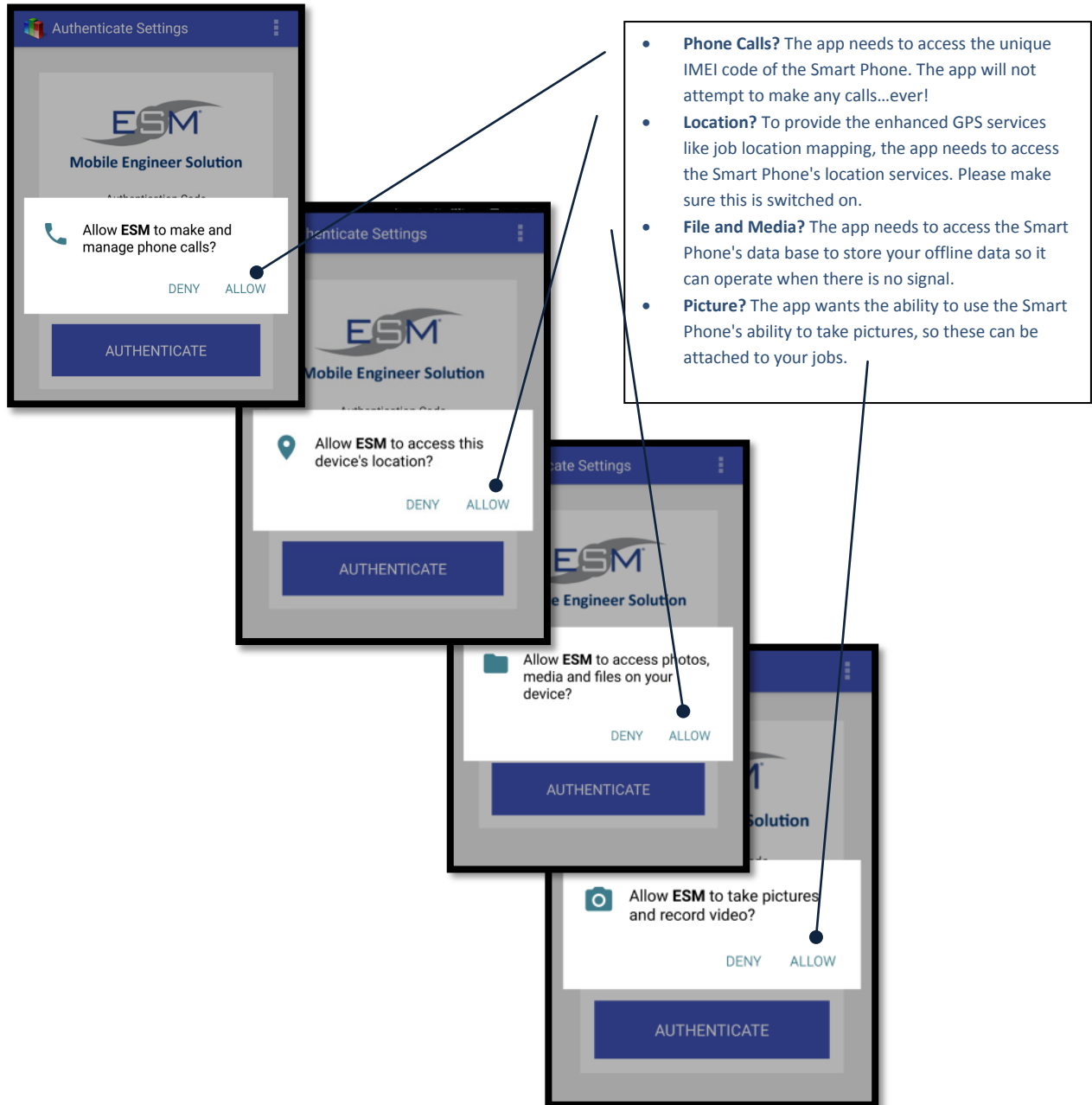
1. Navigate to Play Store on your Smartphone. This is generally on your home screen, but can also be found in 'apps'
  2. Enter 'ESM Lift Engineers' in the search dialogue box
  3. Click on the selected app to commence installation
- Note: To access apps from Play Store you will need a Google account. Please contact your supervisor to obtain your Company's account details as required.





## 2. App Authorisation and Authentication

(i) Authorisation: To operate effectively your ESM app needs permission to access data and details elsewhere on your Smart Phone. Please click 'ALLOW' to each of the questions.

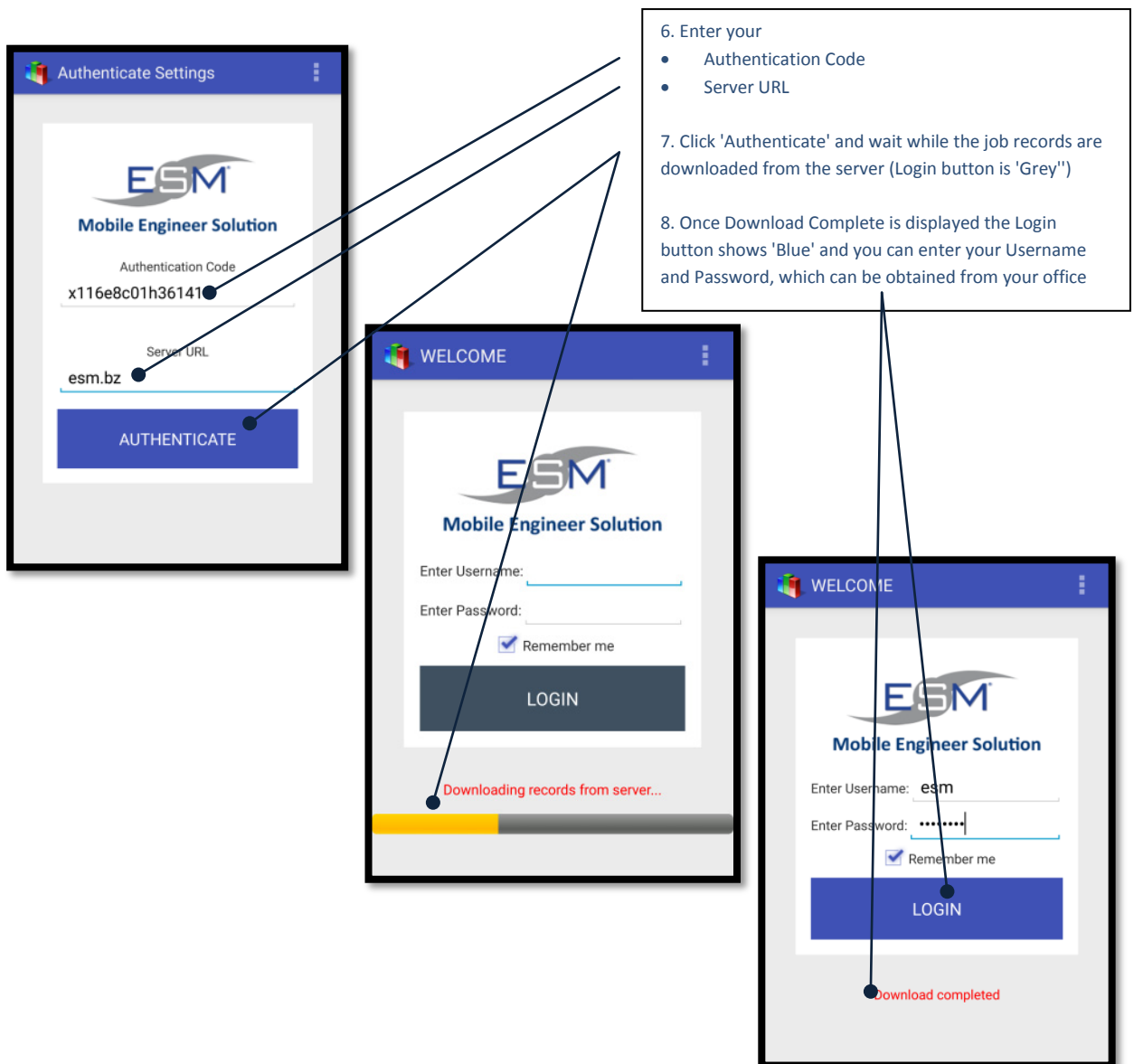


- **Phone Calls?** The app needs to access the unique IMEI code of the Smart Phone. The app will not attempt to make any calls...ever!
- **Location?** To provide the enhanced GPS services like job location mapping, the app needs to access the Smart Phone's location services. Please make sure this is switched on.
- **File and Media?** The app needs to access the Smart Phone's data base to store your offline data so it can operate when there is no signal.
- **Picture?** The app wants the ability to use the Smart Phone's ability to take pictures, so these can be attached to your jobs.

Note: If you do not wish to allow these permissions the app installation will terminate.

(ii) Authentication: The installation now needs to be given;

- an **authentication code**: this enables the app to show your job details. The authentication code can be obtained from ESM Support on 01234 756046. Please have your phone IMEI available. (To obtain this: Using your Smart Phone, dial \*#06#).
- **Server URL**: This is your unique Company access to your ESM database



--- All Done! ---